



Surface Science Instrument

Electron Microscopy
X-Ray Microanalysis
Scanning Probe Microscopy

Analytical Instrument

Spectroscopy
Chromatography

Life Science Products

Biosafety Cabinets
Centrifuges
Temperature Control
Cryopreservation

General Laboratory Equipment

Electronic Balance
Liquid Handling
Autoclave
And More..

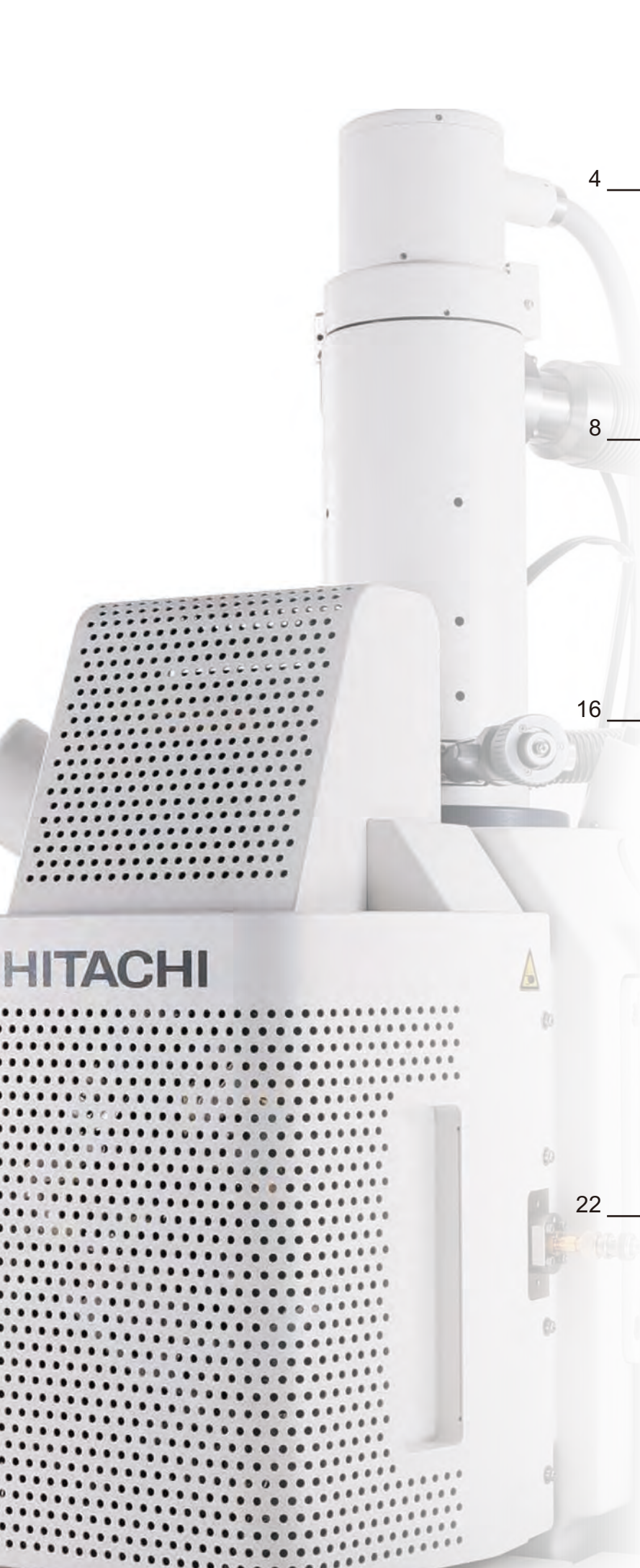
Techcomp Group was founded in 1988 by an entrepreneur, Mr Richard Lo, in Hong Kong. Techcomp started as a trading company distributing high-end state of the art Scientific Instruments. Later on, in 1994, we have successfully established our first Manufacturing Plant in Shanghai China.

As the Asian market continues to develop extensively, Techcomp has established own subsidiaries in Singapore and Thailand between 2004-2008. Since then, we have been and are still expanding our global presence either directly by our own sales offices or through our business partners.

Starting in 2009, our company has decided to expand our product range through acquisitions. Including but not limited to Froilabo from France; Precisa from Switzerland; IXRF from the US; Edinburgh Instruments from the UK; as well as SCION (Former Varian) from Netherland, with the manufacturing plants remaining in their original locations.

Techcomp focused on 3 core technologies: Chromatography, Spectroscopy as well as General Laboratory Equipment. In the past few years, we have been investing heavily in R&D and successfully launched the High-end Raman Microscope and the new series of GC and HPLC just to name a few. We will continue to focus on new product development to provide high-end state of the art Scientific Instruments for customer's needs.

In 2020, Techcomp Group has been reorganized. Techcomp Limited continues to focus on Techcomp own product lines whereas Techcomp Scientific Instrument is the joint venture with Hitachi High-Tech, Japan.



Contents

Surface Science Instrument

4

Electron Microscopy
X-Ray Microanalysis
Scanning Probe Microscopy
EM Sample Preparation

Analytical Instrument

8

Fluorescence Spectrometer
Atomic Absorption Spectrometer
UV-Visible Spectrophotometer
GC & GC-MS
HPLC

Life Science Products

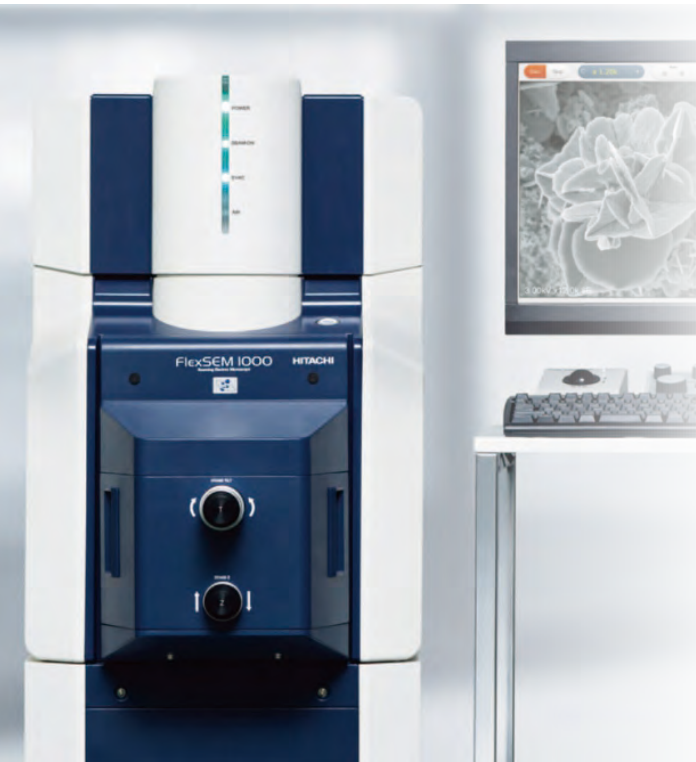
16

Centrifuges
Biosafety Cabinets
CO₂ Incubators
Temperature Control
Autoclaves
Nucleic Acid Isolation
Thermal Cycles
Bioimaging
Electrophoresis
Cryopreservation
Ultrasonic Processors
Concentrator

Other Laboratory Products

22

Electronic Balance
Moisture Analysis
Thermogravimetric Analysis
Freeze Dryers
General Laboratory
Auto Titrators
pH Meter
Glove Box
Pipettes



Tabletop SEM
TM4000 II / TM 4000 II Plus

NEW



Variable Pressure SEM
FlexSEM 1000 II

NEW



High Resolution SEM for Large Sample
SU3900



High Resolution FE-SEM
REGULUS 8100
REGULUS 8200



Ultra-High Resolution FE-SEM
SU9000



Analytical Variable Pressure FE-SEM
SU5000



Ultra - High Resolution FE-SEM
SU7000





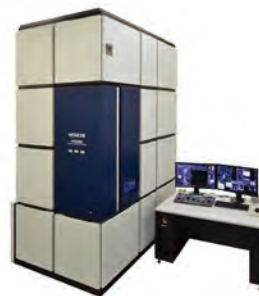
**Transmission Electron
Microscope (120KV)
HT7800**



**Transmission Electron
Microscope (300KV)
H-9500**



**Aberration Corrected
TEM (200KV)
HF-5000**



**Field Emission TEM
(300KV)
HF-3300**



Hitachi High-Tech
HITACHI

Focus Ion Beam System

**Real-time 3D FIB-SEM
NX9000**



**Hybrid FIB-SEM
NX2000**



**High-resolution FIB
MI4050**



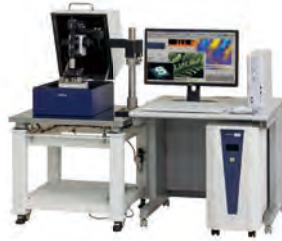
**Ion Milling System
IM4000 Plus / IM5000**



Benchtop AFM
AFM5100N / AFM5010



High Resolution AFM
AFM5100N / AFM5000



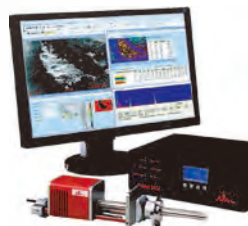
High Sensitivity Large Sample AFM
AFM5400L



Environmental AFM
AFM5300E / AFM5000



EDX System
System Upgrade
Iridium Ultra™



Micro-XRF
ATLAS



EDX System
Silicon Drift Detector



IXRF Compass MPX



**Cryo Preparation System
PP3010 Cryo-FIB/SEM**



**Cryo Transfer
PP3006 CoolLok**



**Cooling System for FIB/SEM
PP3005 SEMCool**



**Ion Sputter
MSP-2S**



**Carbon Coater
VC-100**



INTEGRATED DYNAMICS ENGINEERING Antivibration System



**Antivibration Platform
PAD 600 / 600HC / 1000**



**Active Vibration Isolation
TAW 1500**



**EMI Compensation
System
MK5**

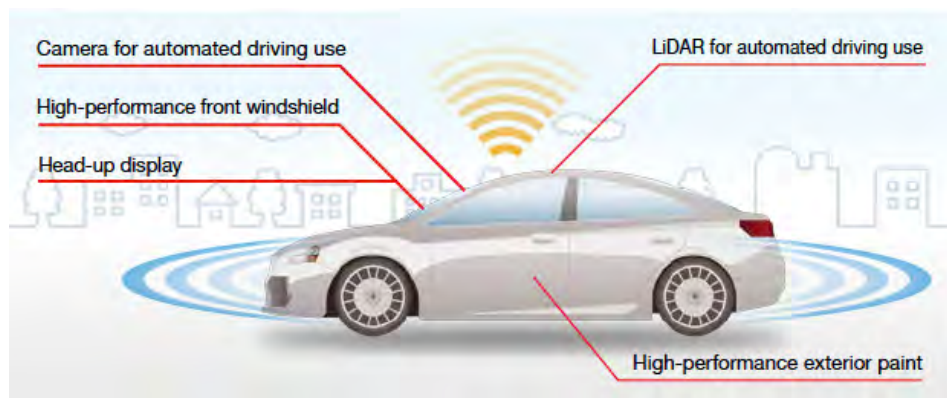


**Active Vibration Isolation
ATAN**





Model UH4150
UV-Visible/NIR Spectrophotometer



Automotive

The UH4150 allows optical evaluation of parts that are needed for automated driving and improved safety!



Hitachi High-Tech HITACHI

Liquid Chromatography

High Performance Liquid Chromatography
Chromaster / ChromasterUltra Rs



High Performance Liquid Chromatography
Primaide



High Speed Amino Acid Analyzer
LA-8080



Hitachi High-Tech HITACHI

Atomic Absorption Spectrometry

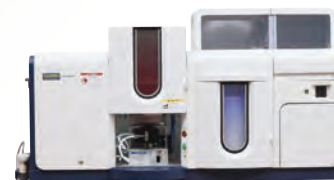
Graphite Furnace AAS
ZA3700



Flame AAS
ZA3300



Tandem Type AAS
ZA3000



Hitachi High-Tech **Fluorescence Spectrometry**

HITACHI

High Sensitivity Fluorescence Spectrophotometer
F-7100



High Sensitivity Fluorescence Spectrophotometer
F-4700



Fluorescence Spectrophotometer NEW
F-2700 / F-2710



Hitachi High-Tech **UV-Visible Spectrometry**

HITACHI

UV-Visible-NIR Spectrophotometer
UH4150



175nm 3300nm



Desktop UV-Vis/NIR Spectrophotometer NEW
UH5700



190nm 3300nm



Research Grade UV-Visible Spectrophotometer
U-3900 / U-3900H



190nm 900nm



Double Beam UV-Visible Spectrophotometer
U-2900 / U-2910



190nm 1100nm



Xenon Lamp Double Beam UV-Visible Spectrophotometer (iPad / PC compatible)
UH5300



190nm 1100nm



Ratio Beam Spectrophotometer
U-5100



190nm 1100nm



HIRANUMA

Automatic Titrators

Potential Titrator
COM-1700A



Automatic Karl Fischer Titrator
AQ-2200A
AQV-2200A



Mercury Analyzer
HG-400





RM5 RAMAN MICROSCOPE

NEW

The RM5 is a compact and fully automated Raman Microscope for analytical and research purposes. The truly confocal design of the RM5 is unique to the market and offers uncompromised spectral resolution, spatial resolution and sensitivity.

The RM5 builds on the expertise of robust and proven building blocks, combined with modern optical design considerations, and focus on function precision and speed. The result is a modern Raman microscope that stands alone in both specification and ease of use.



EDINBURGH
INSTRUMENTS

Fluorescence Spectrometer and Raman Microscope

Fluorescence / Phosphorescence Lifetime Spectrometer FLS1000

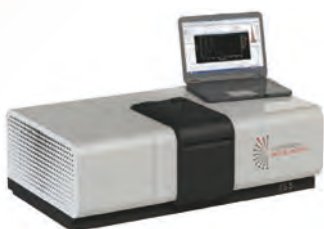


8 Gratings Raman RM 1000

NEW



Fluorescence Spectrometer FS5



Laser Flash Photolysis Spectrometer LP980

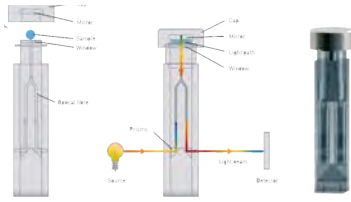


Dual Beam UV-Vis Spectrophotometer DS5

NEW

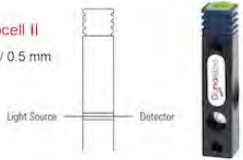


REvolution Halo DNAmaster



ULTRA microcell with 0.1 / 0.2 / 1.0 / 2.0 cell cap

ULTRA microcell II
with 0.125 / 0.2 / 0.5 mm
pathlength



Dynamica UV-Visible Spectrophotometers

UV/Visible Touch-Screen Spectrophotometer
Halo XB-10 / VIS-20



LED Microplate Reader
Halo Ledetect 96



Microplate Reader
Halo MPR-96



Techcomp

UV-VIS Spectrophotometer
UV2600



Fluorescence Spectrometer
FL970



UV-VIS Spectrophotometer
UV2500



ePrep master HRes



uXact3 Digital Syringe





Multipurpose Refrigerated Centrifuge CT18R

User friendly Benchtop Model

Max. RPM & RCF: 18,000 rpm & 31,100 Xg with T18A41 rotor

Maximum Capacity: 4 x 250ml with T5SS31 rotor

himac Centrifuges

Large-Scale Continuous Flow Ultracentrifuge



Preparative Ultracentrifuge CP-NX Series



Micro Ultracentrifuge CS-FNX Series



Tabletop Micro Ultracentrifuge CS150NX



Large Capacity High Speed Refrigerated Centrifuge CR-N Series



High Speed Refrigerated Centrifuge CF-RN / CF-RE Series



Tabletop High-Speed Micro Centrifuge CT15E / CT15RE



Tabletop Centrifuge CT6E / CT6EL



High Speed Refrigerated Centrifuge
Velocity 18R PRO



High Speed Refrigerated Centrifuge
Velocity 18R



High Speed Refrigerated Centrifuge
Velocity 14 / 14R



High Speed Microcentrifuge
Velocity 15 μ



Mini Fuge
Velocity 13 μ



Refrigerated Microcentrifuge
Velocity 15HR



himac 

Blood Cell Washing Centrifuge
MC 450



Large Capacity Centrifuge
NuWind





Autoclaves & Laboratory Equipment

TOMY

FLS1000

100L Large Capacity



Autoclave SX Series



High Speed Refrigerated Micro Centrifuge MDX-310



Low Speed Centrifuge LCX-200



Beads Cell Disrupter MS-100



Mini Centrifuge One Spin/Multi Spin





GC/GCMS & HPLC

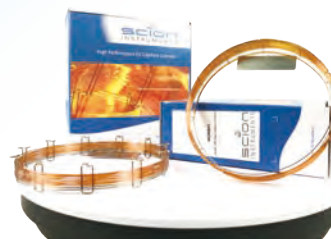
GC and Analyzer



GC-MS



Columns & Consumables



SCION Thermal Desorber



SCION HPLC



Compass Chromatography Data System





Biosafety Cabinets & Fume Hoods

Class II Type A2 BSC
NU-543 / NU-437 / NU-545



Class II Type A2 BSC
NU-560



Class II Type A2 Animal Handling Biosafety Cabinet
NU-602 / NU-677



LabGard CYTO NU-581 Class II, Type A2 Biosafety Cabinet



Pharmacy Isolator PR797/NR800/NTE800
CAI / CACI



Laminar Flow Hood
NU-140/NU-240/NU-340



Polypropylene Fume Hood
NU-156 / NU-162 / NU-164



Bench Top Class / Containment Vented Enclosure (CVE)
NU-813



Mini-Room Class II, Type A2 BSC
NU-125





CO₂ Incubators, General Oven and Incubators

**Direct Heat CO₂ Incubator
NU-5800 Series**



**Compact Direct Heat CO₂
Incubator
NU-5700 Series**



**Water Jacketed CO₂
Incubator
NU-8600 Series**



**Refrigerated Incubator
BRE Series**



**Incubator
BE Series**



**Climatic Test Chamber
SP Series**



**Oven
AE Series**



AIR STREAMER



Froilabo
Precision for life



DEEP FREEZERS

TRUST | EVOLUTION

✓ F-Gas Approved



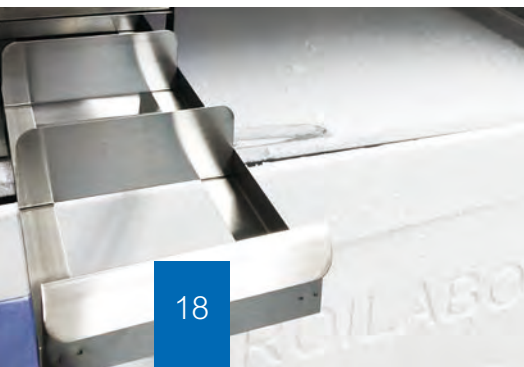
**ULT Freezer
BMT**



**ULT Freezer
TRUST**



**ULT Freezer
Evolution**





Cryopreservation

-190°C High Efficiency Freezer
800 / 1500 / 1800 Series



-50°C to -150°C Freezer
Vario Series



Cryogenic Freezer
HEco Series



Aluminum Specimen Dewar
CryoSystem Series



Aluminum Specimen Dewar
SC / XC Series



Aluminum Specimen Dewar System
CryoSystem 6000 Full Auto



Dry Shipper
Qwick & Doble Series



Liquid Nitrogen Storage
Lab Series



Data Logger
PDF Logger



FREEZE DRYERS AND LYOPHILIZERS

FROM LABORATORY TO PRODUCTION

MILLROCK
TECHNOLOGY

Pilot Freeze Dryer
Epic Series



Large Capacity Freeze Dryer
Magnum Series



Large Capacity Freeze Dryer
Revo Series



Medium Capacity Freeze Dryer
Stellar Series



Console Manifold Freeze Dryer
MD Series



R&D Freeze Dryer
MicroFD®



Tray Freeze Dryer
LyoPro

NEW

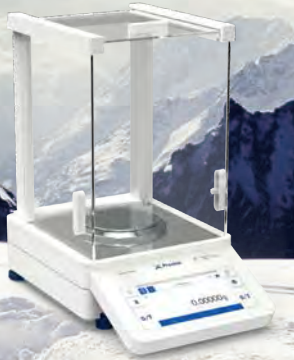


RevoPro

Benchtop Freeze Dryer
FDS-1000



EYELA



Series 520 PB / PT

Precisa's all new weighing cell, the PHASTbloc™ (Precisa Hybrid Advanced Sensor Technology) integrates the benefits of the monolithic design plus easy access for maintenance.

The PHASTbloc with the latest generation of electronics and user software delivers the best-in-class weighing results using either a large, high resolution touch screen in the PT model or traditional buttons and display in the PB model.



PHASTbloc weighing cell

Premium Semi-Micro & Analytical Balance
390 Series



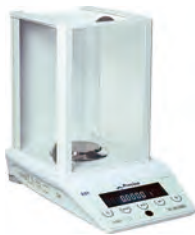
Semi-Micro & Analytical Balance
EP & ES Series



Analytical & Precision Balance
LX Series



Analytical & Precision Balance
LS Series



Moisture Analyser
XM Series



Thermogravimetric Analyser
PrepASH Series



Carat Balance
Series 165BJ



Weighting Station **NEW**
Captair Smart



GENE PREP STAR

Automated Isolation System PI-480



KURABO

Mini DNA/RNA Isolation System
QuickGene-Mini480



Mini DNA/RNA Isolation System
QuickGene-Mini8L



Mini DNA/RNA Isolation System
QuickGene-Auto12S



DNA/RNA Isolation System
QuickGene-Auto24S



DNA/RNA Isolation System
QuickGene-Auto240L



Mini DNA/RNA Isolation System
PI-480 / PI-1000 / NA-480 /
NA-480 +



GeneFields Quick Real-time PCR System
GF-Q150



MAZERUSTAR KK Series Planetary Mixer
KK-250s



MAZERUSTAR KKV Series Vacuum Deaerator
KK-V350W



UV / Bio-Imaging & Thermal Cycler

Dynamica Thermal Cycler & Bio-imaging

**Gradient Thermal Cycler
C-Master GT**



**Regular Thermal Cycler
C-Master RT**



**Gel Documentation System
GelView Master**

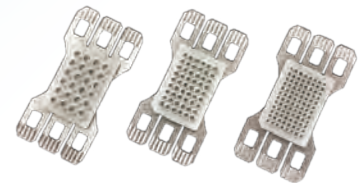


xxpress[®] NGx
The Fastest qPCR thermal cycler in the World

**BJS xxpress qPCR
Multiplexing qPCR system**



**BJS xxpress qPCR
xxplate[™] aluminium**



**PCR Workstation
UV Series**



Transilluminator



UVP



RAININ
Pipetting 360°

Liquid Handling for Life Sciences

**Manual Single Channel
Pipet-Lite XLS**



**Manual Multichannel Pipette
Pipet-Lite XLS**



**Adjustable Spacer Pipette
LA6-300XLS**



**Single Channel E-Pipette
E4 XLS**



**Multichannel E-Pipette
E4 XLS**



**Adjustable Saperer
E-Pipette
E4 XLS**



**Repeater Pipette
Rainin Autorep E**



Rainin SmartStand



Rainin Pipette Tips





DIAB

Your Accessible Solution

Laboratory Products

**Mechanical Pipette
Micropette Plus**



**Electronic Pipette
dPetite+ / dPetite**



**Pipette Filler
Levo Plus**



**Vortex Mixer
MX-S**



**Rotary Evaporator
RE100-Pro**



Alloy-Bead Heating Bath



**Hotplate Stirrer
MS Series**



**Thermo Mixer
HC110-PRO**



**Shaker
SK Series**



**Rotator
MX Series**





**Electronic Pipette
Ovation Single Channel**



**Electronic Pipette
Ovation Multi Channel**



**Electronic Pipette
Ovation Macro Volume**



**Aliquoting Pipet Controller
Ovation® ali-Q™**



Wobble Not



**Mechanical Single Channel
Ovaion M**





**LABOSTAR®
UV 4 SYSTEM**



**LABOSTAR®
TWF SYSTEMS**



**LABOSTAR®
RO DI SYSTEMS**



**EVOQUA Ultra Clear®
TP TWF Ultra Pure**



**EVOQUA Ultra Clear®
TP TWF EDI Ultra Pure**



**EVOQUA Ultra Clear®
Ultra Clear TP**



Dynamica
Electrochemistry

*pH Meter for Routine & Life
Science Applications*
pHMaster Series



Electrophoresis Related



**Blue Light
Electrophoresis System
SafeBlue**



Power Supply



Electrophoresis Product



Dry Bath Incubator



Stirring Water Bath



Hybridization Oven



Small Volume Applications
VCX130 Series



Small to Medium Volume Applications
VCX500 / VCX750 Series



Large Volume Applications
VCX1500



HWASHIN TECHNOLOGY

Ultrasonic Bath

Ultrasonic Cleaner Bath
Power Sonic 600 Series



Ultrasonic Cleaner Bath
Power Sonic 600 Series



Ultrasonic Pipette Cleaner
Power Sonic 212



Evaporator T.C.S
EC-1648



Evaporator
Evatros mini



Under Counter Freezer
-86 °C ULT U100



-60 °C Chest Freezer
XLT C75



H2O2 Bio-Decontamination System **NEW**



**Guardion H₂O₂ System
Main unit**



**Guardion Dispenser
Dispenser Head**



Guardion Tripod



Guardion Pin Gauge



Biological Indicator



STERION



Techcomp Global Partnership Network

Hitachi High-Tech
HITACHI

IXRF SYSTEMS

**EDINBURGH
INSTRUMENTS**

Dynamica

himac

Froilabo

Precisa

TOMY

COV
LAB PRODUCTS

NUARE

**SECURITY
THROUGH
MVE
SYSTEMS**

erlab
Simpler Safer

UVP

**SCION
INSTRUMENTS**
A Techcomp Company

GUARDION
CLEAN & SAFE

**MILLROCK
TECHNOLOGY**
millrocktech.com

HIRANUMA

MS major
science

DLAB
Your Accessible Solution

KURABO

SONICS

YMC

RAININ
Pipetting 360°

VistaLab™
TECHNOLOGIES

eVOQUA
WATER TECHNOLOGIES

xxpress® NGx
The Fastest qPCR thermal cycler in the World

Quorum

gooJung

EST
analytical

HSt
HWASHIN
TECHNOLOGY
SINCE 1991

FRONTIER LAB

N
NORDIC LAB

INTEGRATED DYNAMICS ENGINEERING



www.techcomp.com.hk

China - Hong Kong - United States - United Kingdom - France - Switzerland - Singapore - Thailand - Dubai

Techcomp Limited

26th Floor, Ever Gain Plaza Tower 1, 88 Container Port Road,

Kwai Chung, N.T., Hong Kong

Tel: 852-2751 9488

Fax: 852-2751 9477

techcomp@techcomp.com.hk

Version: 2020/1